

Nisei Ski Club presents...

France Magnifique

October 23 – November 3, 2025



Book Now
& Save
\$200
Per Person

Upgrade to Elite Airfare! See inside for details.

For more information contact
Jeanne Katsuro, Nisei Ski Club

408-569-1415

ClassicRock570@aol.com

collette



12 Days • 16 Meals: 10 Breakfasts, 1 Lunch, 5 Dinners

HIGHLIGHTS... Versailles Palace & Gardens, Giverny, Normandy, D-Day Landing Sites, Omaha Beach, American Cemetery, Le Mont St. Michel, Loire Valley, Winery Tour, 2-Night Château Stay, Chenonceau Castle, Amboise, Paris, Choice on Tour: Paris City Tour by Bus or Montmartre by Metro Walking Tour, Seine River Cruise, Eiffel Tower Dinner

ITINERARY AT A GLANCE

- Day 1 Overnight Flight
- Days 2, 3 Le Louis Versailles Chateau - MGallery, Versailles
- Days 4, 5 Best Western Hotel Le Moderne, Caen
- Days 6, 7 Hotel Oceania, Saint-Malo
- Days 8, 9 Chateau de Beauvois, Loire Valley
- Days 10, 11 Hyatt Regency Paris Etoile, Paris

On some dates alternate hotels may be used.

Day 1: Thursday, October 23, 2025 Overnight Flight Embark on your journey through France. Bask in the rich history, art, culture and romance of its celebrated cities and charming towns.

Day 2: Friday, October 24, 2025 Versailles, France *Bienvenue en France*, and to charming Versailles. Celebrate the beginning of your voyage with a savory French dinner in the culturally rich town of Versailles. (D)

Day 3: Saturday, October 25, 2025 Versailles - Royal Palace and Gardens Start your day with an exploration of the iconic Palace of Versailles (UNESCO). A guide will lead you through the Private Apartments of King Louis XIV, the Sun King, who transformed his father's hunting lodge into the resplendent seat of the Royal Court. Continue your visit independently through the lavish State Apartments. From the prominent Hall of Mirrors to the opulent bedchamber of the queen, take in Versailles' most famous sights at your own pace. This afternoon your exploration continues in the palace's grandiose formal gardens, where the Baroque fountains regularly spout water to the tune of classical music.* (B)

Day 4: Sunday, October 26, 2025 Versailles - Giverny - Caen** Journey into Normandy and let the art scene leave its impression on you with a visit to Monet's countryside home at Giverny.** Stroll through the colorful living work of art that is Monet's garden, where you'll see the source of the artist's inspiration, including the setting for his iconic *Waterlilies*. Then, set off through the rich pasturelands of Normandy to the city of Caen, your home for the next 2 nights. (B, D)

Day 5: Monday, October 27, 2025 Caen - Normandy American Cemetery - Sainte-Mère-Église - Caen This morning, explore the Caen Peace Memorial Museum dedicated to providing a comprehensive history of the D-Day landings and Europe's post-war transition. Then, pay your respects at the Normandy American Cemetery & Visitor Center. See the stars and stripes raised over the graves of the valiant soldiers who gave their lives in the Battle of Normandy, and stop at Omaha Beach. Next, make your way to Sainte-Mère-Église, the heart of the American Airborne operations on D-Day, and visit its parachute-shaped Airborne Museum. Learn the unique history of paratroopers in Saint-Mère-Église, the first French town liberated from the Nazis. Then, return to Caen. (B)

Day 6: Tuesday, October 28, 2025 Caen - Arromanches - Saint-Malo Your exploration of the D-Day Landing Sites continues today and will start with a walk through Pointe du Hoc Ranger Memorial. See where the 2nd Ranger Battalion scaled 100-foot cliffs on D-Day to seize the fortified enemy position. Then visit Arromanches-les-Bains to see the remains of the artificial Mulberry port built by the Allies to resupply their lines during the liberation of France. After some free time to have lunch on your own, pause at a local farm. Stroll through their apple orchards and get a taste of their traditional cider. Then it's off to Saint-Malo, Brittany's famous coastal village. Immerse yourself in the beautiful beaches, striking blue water, and views of the fortified Old Town. Tonight, enjoy a freshly prepared local dinner. (B, D)

Day 7: Wednesday, October 29, 2025 Saint-Malo - Le Mont St. Michel - Saint-Malo Travel to Le Mont St. Michel*** (UNESCO), the "Wonder of the West." Resting on the border between Normandy and Brittany, this world-famous pilgrimage site sits on the edge of the sea and becomes an island at high tide. Take in the breathtaking views as you stroll through the old village at the base of the Abbey before exploring one of the most beautiful monastic complexes in France, dating back to the 11th century. Return to Saint-Malo and enjoy time to relax or explore independently. (B)

Day 8: Thursday, October 30, 2025 Saint-Malo - Chinon - Loire Valley Journey south to the Loire Valley, a UNESCO site brimming with châteaux and parks. Arrive in the medieval village of Chinon. Joan of Arc first met young Charles VII here and shared her vision that he would defeat the English during the Hundred Years' War. Visit the market, abundant with fresh produce, flowers and local products, and take time to enjoy lunch along the banks of the Vienne River. Next, tour a local winery and discover some of the

PLEASE NOTE:

Book Now rates valid until Apr 24, 2025, valid on air inclusive packages only.

The overall activity level of this tour is a level 3. This means you're an on-the-go traveler. You don't want to miss a thing, so walking and standing for longer periods of time (2-3 hours) isn't a big deal. A moderately paced two-and-a-half-hour walking tour, covering several miles, hills, and uneven surfaces, is no problem for you. Walking four miles over the course of a day is very doable, as is climbing into and out of various modes of transportation (tuk-tuk, cable car, zodiac, etc.). You can climb three flights of stairs easily and handle altitudes between 6,000 and 9,000 feet. Expect some longer days with early mornings or late nights balanced with free time to recharge or set out on your own adventure. This level is not a fit for travelers who require mobility assistance devices.

Travel with an average of 37 people (maximum of 44).

***Access to Mont St. Michel is via a shuttle bus requiring the ability to stand for the duration of the ride (approximately 10 minutes each way). The shuttle drops off 0.2 miles (350 meters) from the village walls. From that point, the visit is entirely on foot. Visiting the old village requires the ability to navigate cobblestoned streets and steep inclines (between 8% and 15%). There are no handrails in the village streets. The visit to the Abbey requires the ability to climb up to 350 steps: around 200 are outdoors (to reach the top of the Grande Rue), then 150 are inside the abbey. The steps range in height between 7.5 and 11 inches (19 to 28 cm). There are no elevators or escalators at Mont St. Michel.

Some of the most unique sightseeing can mean accessing locations that restrict motor coaches, especially in historic areas such as Le Mont St. Michel, Saint-Malo, and the villages of Chinon and Amboise. For your comfort, we recommend bringing walking shoes. If you have difficulty walking, you may not be able to access some of these areas and may want to consider an alternate program with us. Our travel counselors can provide additional information or assistance to help you determine the perfect trip for you.

If you require any special assistance while on tour, please make us aware at time of reservation so the necessary request form can be sent to your attention.

Days of features are interchangeable.

Outdoor markets may not be available in case of adverse weather conditions or local holidays.

****Paradis Latin cabaret show may be considered unsuitable for children – consult your Tour Manager.

Please note that most shops in smaller towns are closed on Sundays and on national/religious holidays.

*The musical fountain show is available on Saturdays and Sundays between early April and late October. Depending on the season, there are different experiences. Please consult your Tour Manager while on tour as the exact starting date changes yearly depending on weather conditions and local holidays. If your stay is between the end of June to early September, a Night Visit with Fireworks Show (Les Grandes Eaux Nocturnes) may occur. If you are interested, we encourage you to consult the official Versailles site and program and buy the tickets in advance.

**Monet's Gardens in Giverny are open from April to October. If you are travelling at a different time of the year, you will visit Rouen instead.

Single accommodations are limited and are available on a first come, first served basis. Single rate subject to change based on availability. Triple accommodations are not available due to hotel restrictions.

To complete your tour, we include roundtrip airport-to-hotel transfers when purchasing our airfare with your tour. If you have arranged for your own air, we are pleased to provide you the option of purchasing these transfers. Please note that all transfers will leave at pre-scheduled times.

Our air passengers will arrive into and depart from Paris airport. All transfers will depart from/return to this airport.



For air-inclusive reservations, the name provided at time of booking must match your government-issued ID that will be used during travel. Name changes are subject to penalties.

Please be advised many airlines do not provide advance seat assignments until check-in at the airport. Advance seating will be subject to the airline's terms and conditions.

IDENTIFICATION

Passports are required for this tour at your expense. Certain countries require that your passport be valid at least 6 months beyond the dates of your travel. You are strongly urged to contact the appropriate consulate for details. Visit www.travel.state.gov for the U.S. State Department for the latest details about passports and visa requirements.

IMPORTANT: We recommend that travelers take a photocopy of their passport and applicable visas. It should be packed separately from your actual passport and visa. We also recommend leaving a copy at home with your emergency contact.

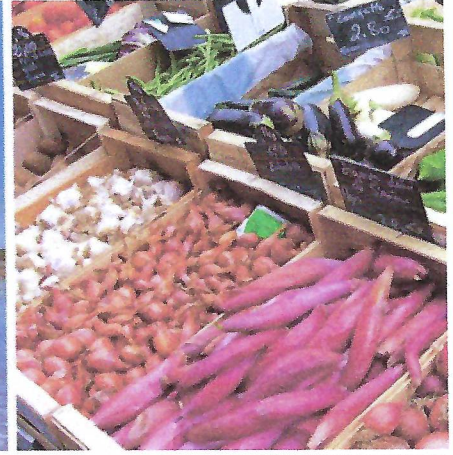
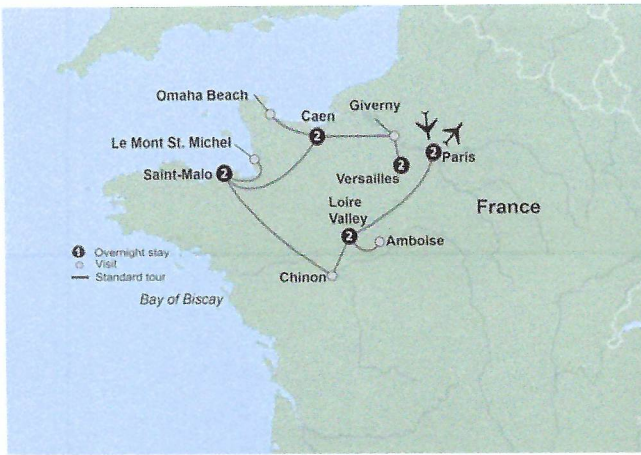
Effective for travel in May 2025, all visitors who do not need a visa to enter Europe will be expected to apply for an ETIAS visa waiver, for a fee, when visiting a Schengen Area Country. To identify Schengen Area Countries and to complete the ETIAS application, please visit <https://www.etiasvisa.com/>

Economy air rate and schedule are applicable for groups of 10 or more traveling on the same flights and dates.

A deposit of \$698 per person is due upon reservation. Reservations are made on a first come, first served basis. Reservations made after the seat reduction date of April 17, 2025 are based upon availability. Final payment due by July 25, 2025. Deposits are refundable up until April 24, 2025.

CST#2006766-20 UBN#601220855 Nevada Sellers of Travel Registration No. 2003-0279

**For important reservation information visit
<https://gateway.gocollette.com/link/1286433>.
You can also find this information on your tour documents.**



Book Now & Save \$200 Per Person:

Double \$6,199; **Double \$5,999***
Single \$7,299 **Single \$7,099**

For bookings made after Apr 24, 2025 call for rates.

Included in Price: Round Trip Air from San Francisco Intl Airport, Air Taxes and Fees/Surcharges, Hotel Transfers
Not included in price: Cancellation Waiver and Insurance of \$549 per person

* All Rates are Per Person and are subject to change, based on air inclusive package from SFO

Upgrade your in-flight experience with Elite Airfare

Additional rate of: Premium Economy \$1,590; Business Class \$4,190

• * Elite Air pricing (Premium Economy, Business Class or First class) is valid until 8 months prior to departure, after which rates are subject to change and will be quoted based upon availability.

† Refer to the reservation form to choose your upgrade option

IMPORTANT CONDITIONS: Your price is guaranteed once deposit is received and booking confirmed by Collette. Your price is not subject to increase after the deposit is received and booking confirmed, except for charges resulting from increases in government-imposed taxes or fees. **(See registration form for consent.)**

Loire Valley's best wines. This afternoon, feel like royalty when you arrive at your 15th-century castle accommodations at the Château de Beauvois. Delve into the history of this site frequented by King Louis XIII as you enjoy some leisure time to explore the grounds or relax on the château's charming terrace. This evening, delight in gourmet French cuisine in the opulent dining room of your château. (B, D)

Day 9: Friday, October 31, 2025 Loire Valley - Chenonceau - Amboise - Tours - Loire Valley Explore the spectacular Château de Chenonceau at your own pace. Perched along the banks of the Cher River, this romantic castle is a jewel of Renaissance architecture. Head to the picturesque center of Amboise. Enjoy some free time for exploring before reaching Tours, where a local expert will introduce you to the town and their local culture. (B)

Day 10: Saturday, November 1, 2025 Loire Valley - Paris Travel the French countryside to France's capital, the City of Light – Paris. Pause for lunch at a modern *bistro*, before gliding under romantic bridges during a scenic cruise along the Seine River. Take in the city's most iconic landmarks such as Notre Dame

Cathedral, the Conciergerie, and Île Saint-Louis peeking at you from the banks of the Seine (UNESCO). As your day comes to a close, make the most of an evening at leisure in this incredibly walkable, world-famous city. Perhaps you will enjoy an optional dinner at the dynamic Paradis Latin**** for a champagne-flowing, can-can kicking, music-driven night at the cabaret. (B, L)

Day 11: Sunday, November 2, 2025 Paris This morning, **it's your choice!** Take in the most iconic sights of Paris on a panoramic city tour, seeing the Arc de Triomphe, Champs-Elysees, Notre Dame Cathedral, and Place de la Concorde **-OR-** join a local guide and hop on *Le Métro* to the hilltop neighborhood of Montmartre and its iconic Sacré-Cœur Basilica. Take advantage of a free afternoon to write your own story in romantic Paris. This evening, celebrate the conclusion of your French voyage during an exclusive dinner at the Eiffel Tower, featuring French cuisine and panoramic views of the City of Light. (B, D)

Day 12: Monday, November 3, 2025 Paris - Tour Ends Set out for home with many magnificent memories. (B)

Experience It! Normandy

Discover a place etched in history on June 6, 1944, the day when thousands of allied troops landed on the beaches of Normandy. Many brave men from the United States, the United Kingdom, France, Australia, New Zealand, Canada and more gave their lives on this day known today as D-Day and often referred to as the "beginning of the end of the Second World War." Reflect during your visit to the Landing Beaches, dotted with memorials and museums dedicated to the troops who fought here. One of the most poignant locations is the cemetery located in close proximity to Omaha Beach, which is the largest American burial site in the region with 9,000 gravestones set in perfect alignment. Throughout your time in Normandy, you will see many reminders of this tragic time and turning point for WWII.

For more information visit <https://gateway.gocollette.com/link/1286433>



162 Middle Street
 Pawtucket, RI • 02860
 Phone: 1-866-923-1753 Fax: 1-401-727-9014

If paying by credit card, please complete this form and return to Nisei Ski Club. We can only charge your credit card for the amount noted if the signature, address and phone number are listed below. Thank you!

CREDIT CARD AUTHORIZATION FORM

BOOKING NUMBER: 1286433
 DEPARTURE DATE: October 23, 2025

TOUR: France Magnifique
 GROUP NAME: Nisei Ski Club

Name of Passenger: _____
 Salutation: _____ First Name: _____ Middle Initial: _____ Last Name: _____ Suffix: _____
(Mr., Mrs., Rev.) (Please print as it appears on Passport) (Jr., Sr.)

Cardholder Name: _____
(Please print as it appears on your Credit Card)

Cardholder Address: _____
(as it appears on your credit card statement)

Cardholder Phone: _____

Credit Card Type: ___ American Express ___ Discover ___ MasterCard ___ Visa

Credit Card Number: _____

Expiration Date: _____ Amount to be charged: \$ _____

Cardholder's Signature: _____ Date: _____

I agree to pay according to the card issuer agreement. I understand and accept Collette cancellation policy, terms and conditions.

Participating credit card companies are now requiring a billing address and phone number for **FRAUD PREVENTION**. All information **MUST** be provided. Thank you for your cooperation!
 If using your credit card for payment, please return this Authorization Form by mail to:

Nisei Ski Club
 Attn: Jeanne Katsuro
 1346 The Alameda Suite 7-117
 San Jose, CA 95126

Above credit card information has been called in to Collette.



162 Middle Street
 Pawtucket, RI • 02860
 Phone: 1-866-923-1753 Fax: 1-401-727-9014

BOOKING NUMBER: 1286433
 DEPARTURE DATE: October 23, 2025

TOUR: France Magnifique
 GROUP NAME: Nisei Ski Club

Available Options

Personalize your tour by adding an optional activity below. Our recommended options have been carefully chosen to help enhance your individual experience. Complete the provided Prepaid Options Form to reserve your options.

Availability is limited and reservations are on a first come, first serve basis. Payment must be received no later than 15 days prior to departure. Prices are subject to change.

Children under the age of 18 **MUST** be accompanied by an adult.

Paris

Showtime in Paris!

\$225 USD

Join us for a spectacular evening in one of Paris's most beloved institutions, the famous Paradis Latin. Situated in a building associated with Napoleon and rebuilt by Gustav Eiffel himself, the Paradis has been running here since 1889. Enjoy a sumptuous dinner with wine, then bring on the champagne and let the show commence! *Duration: Approximately 5 hours.* Please note a minimum of 15 passengers is required. Transportation is included.

PASSENGERS NAME: (Please submit a separate form for each passenger)

Salutation: _____ First: _____ Middle: _____ Last: _____ Suffix: _____ Nickname: _____
(Mr., Mrs., Rev.) (Please print EXACTLY as it appears on Passport) (Jr., Sr.)

✓	Option	Price Per Person (USD)
✓	Showtime in Paris!	225.00

Please make checks payable to Collette and send to:

Nisei Ski Club
 Attn: Jeanne Katsuro
 1346 The Alameda Suite 7-117
 San Jose, CA 95126



TRAVEL DATE: 10/23/2025 TERRITORY: WA
RES#: 1286433

France Magnifique

For Reservations Contact: Jeanne Katsuro 408-569-1415 email: ClassicRock570@aol.com

Nisei Ski Club, 1346 The Alameda Suite 7-117, San Jose, CA 95126

A deposit of \$698 per person is due upon reservation. Reservations are made on a first come, first served basis. Reservations made after the seat reduction date of April 17, 2025 are based upon availability. Final payment due by July 25, 2025. Deposits are refundable up until April 24, 2025.

YOUR INFORMATION: Clearly print your full name (first/middle/last) as it appears on your government issued travel documentation.

IMPORTANT: In order to avoid any unnecessary change fees, it is imperative that all guest names are entered correctly from the start. The information below must be the legal name and be 100% identical to the ID being used to travel <passport/driver's license> including middle names or suffixes <Jr, Sr>.

First: _____ Middle: _____ Last: _____ Suffix: _____

Nickname: _____ Gender: () Male () Female Date of Birth: month _____ day _____ year _____

Address: _____ City: _____ State: _____ Zip Code: _____

Phone: () _____ Cell: () _____ Email Address: _____

Passport Number: _____ Expiration Date: (month/day/year) _____ Date of Issuance: (month/day/year) _____

City, State, Country of Issuance: _____ Citizenship: _____

Should you become ill or injured, whom should we contact (not traveling with you): _____ Phone: () _____

ROOMING WITH: Check if address is the same as Passenger #1

First: _____ Middle: _____ Last: _____ Suffix: _____

AIR GATEWAY: Departure airport for this tour: _____

Air Seat Request: () Aisle () Window () Next To Traveling Companion

Collette cannot guarantee your seat preference. If you have not purchased air through Collette and wish to purchase transfers, you must transfer at our pre-scheduled times.

Please be advised, when travelling as part of a group, many airlines do not provide seat assignments. Preferred seating may be available for an additional charge.

Please reserve an upgrade to Elite Airfare for an additional rate of: Premium Economy \$1,590 Business Class \$4,190

Service is limited and not available on all flights or carriers. Other restrictions may apply. Please note: if you purchase an upgrade, we cannot guarantee the same flight schedule as the group. Upgraded class of service is for the international portion of the journey only.

Elite Air pricing (Premium Economy, Business Class, or First Class) is valid until 8 months prior to departure, after which rates are subject to change and will be quoted based upon availability.

Are you willing to separate from the group air schedule to accommodate your upgrade request? () Yes () No

"Federal law forbids carriage of hazardous materials such as aerosols, fireworks, lithium batteries & flammable liquids aboard the aircraft in your checked or carry-on baggage. A violation can result in 5 years' imprisonment and penalties of \$250,000 or more. Details on prohibited items may be found on TSA's "prohibited items" web page:

[http://www.tsa.gov/traveler-information/prohibited-items.](http://www.tsa.gov/traveler-information/prohibited-items)"

TRAVEL PROTECTION: () Yes, I wish to purchase travel protection \$549 () No, I decline

If you choose not to purchase Collette's Waiver Insurance Plan, you will incur penalties for changes and cancellations. Travel Protection Payment is due with first deposit. The Waiver Fee does not cover any single supplement charges which arise from an individual's traveling companion electing to cancel for any reason prior to departure. The single supplement will be deducted from the refund of the person who cancels. (There is coverage under Part B which includes a single supplement benefit of \$1,500 for certain covered reasons. See Part B for details.)

ON TOUR ACTIVITIES: Please choose one of the following on tour activities

Please Choose One: (subject to availability)

() Hotel Oceania - Standard (included)

() Hotel Oceania - Deluxe Sea View (additional charge of \$170.00 double, \$340.00 single required)

Please Choose One:

() Paris Panoramic Bus tour

() Montmartre by Metro Walking Tour

PLEASE MAKE CHECKS PAYABLE TO: Collette () Check () Credit Card

Waiver/Insurance Amount: \$ _____ Deposit Amount: \$ _____ Total amount enclosed: \$ _____

Cardholder Name (if paying by Credit Card): _____

Cardholder Billing Address: Check if address is the same as above _____

Cardholder Phone: _____ Amount: \$ _____

Credit Card Number: _____ Expiration Date: _____ M M Y Y

SIGNATURE REQUIRED for acceptance of the below conditions and agreement to credit card use:

Date: _____

I agree to pay according to the card issuer agreement. I understand and accept the cancellation policy, terms and conditions. See <http://www.gocollette.com/about-collette/terms-and-conditions> for full terms and conditions of your purchase.

Important Conditions: Your price is guaranteed once deposit is received and booking confirmed by Collette. Your price is not subject to increase after the deposit is received and booking confirmed, except for charges resulting from increases in government-imposed taxes or fees.



Special Needs Form

Please complete this form, sign and return it to us within 14 days of receipt.

Email: TravelOperations@collette.com

Fax: 401.727.4745

Mail: Collette: Travel Operations

180 Middle Street

Pawtucket, RI 02860

TRAVELERS NEEDING SPECIAL ASSISTANCE

You must report any disability requiring special attention to Collette at the time the reservation is made. *Collette will make reasonable efforts to accommodate the special needs of tour participants. Such participants, however, should be aware that the Americans with Disabilities Act is inapplicable outside of the United States and facilities outside the United States for disabled individuals are limited. It is strongly recommended that persons requiring assistance be accompanied by a companion who is capable of and totally responsible for providing the assistance. Neither Collette nor its personnel, nor its suppliers, may physically lift or assist clients into transportation vehicles. If a traveler thinks he or she might need assistance during a trip, he or she should call Collette to determine what assistance might reasonably be given. Collette cannot provide special individual assistance to tour members with special needs for walking, dining, or other routine activities. Internationally, a great deal of walking may be necessary to fully enjoy the destination. Travelers should be in good health and must be able to walk reasonable distances. In some areas, travelers may be required to walk on uneven ground, cobblestone streets or raised thresholds.

****To request a wheelchair accessible room on a cruise, the traveler or person sharing the room must have a recognized disability that alters a major life function and requires the use of a mobility device and the use of the accessible features provided in the wheelchair accessible stateroom. The cruise company may take appropriate action against someone who has reserved or purchased such a stateroom fraudulently. Action may include but is not limited to removal from the stateroom to a non-accessible accommodation up to denial of boarding.***

Reservation # _____

Name: _____ Male or Female (circle one)

Are you traveling with a wheelchair? Yes No

If you answer "YES"

- Does your wheelchair collapse? Yes No
- Can you stand and climb steps to board the coach without it? Yes No
- Are you capable of lifting your own wheelchair? Yes No

If you are not capable of lifting your own wheelchair who will provide assistance?

This form cannot be processed without the dimensions of your wheelchair:

Height _____ Length _____ Width _____

Are you traveling with a walker? Yes No

If you answer "YES"

- Does your walker collapse? Yes No

This form cannot be processed without the dimensions of your walker:

Height _____ Length _____ Width _____

Tour Managers and drivers do not provide assistance lifting, pushing or carrying wheelchairs or walkers. Motorized scooters are not permitted on tour.

Are you requesting any hotel room accommodations? Yes No

If "YES" Please indicate if one or more of the following is required in the washroom.

- Walk-in shower Yes No
- Grab bars Yes No
- Raised toilet seat Yes No

Please provide any details in reference to the nature of your request.

Most hotel rooms that can accommodate the request will be equipped with only 1 bed.

Do you understand and accept? Yes No

Collette cannot guarantee the availability of such rooms as many hotels have a limited number of rooms that are equipped with the above accommodations.

Are you traveling with an oxygen tank? Yes No

If you answer "YES"

- You must contact the airline directly to arrange transportation of the oxygen on the plane. Oxygen requests vary by airline and location and can take up to 2 weeks to request.
- You are responsible for supplying your own electrical cords, and converters as needed.

This form must be remitted within 14 days of receipt for any special needs accommodation request.

Collette cannot provide special individual assistance to tour members with special needs for walking, dining, or other routine activities and motorized scooters are not permitted on tour.

The Americans with Disabilities Act only applies in the United States. Many international destinations cannot accommodate passengers' requests. Collette will make all reasonable efforts to accommodate the special needs of tour participants, but we cannot guarantee that all requests will be honored on international destinations.

Collette also regrets that it cannot provide individual assistance to a tour member with special needs for walking, dining, or other special personal needs. It is strongly recommended that persons requiring assistance be accompanied by a companion who is capable and totally responsible for the assistance.

I have read and understand the above:

Signature: _____

Print Name: _____

Internal Use Only

Reason: _____

Tour: _____ Reservation # _____

TS/Group: _____

Tour Date: _____